



FEATURED SESSION

CHARLES DUCLAUX, L'ORÉAL

on a first-of-its-kind methodology for social footprint



## Speakers

Our Content Development team is currently hard at work bringing together another impressive list of thought-leaders for this year's metrics focused conference. While we are still working to add more speakers, you can view this year's confirmed speakers below. And



<http://twitter.com/intent/tweet?text=Join+over+60+experts+and+leaders+in+over+30+engaging+sessions+at+New+Metrics+'14+%7C+View+%20Speakers&summary=Join%20over%2060%20experts%20and%20leaders%20from%20Bloomberg,%20Deutsche%20Bank,%20GlobeScan,%20L'Oréal,%20HP,%20World%20Resources%20Institute%20and%20>

[%20Speakers&summary=Join%20over%2060%20experts%20and%20leaders%20from%20Bloomberg,%20Deutsche%20Bank,%20GlobeScan,%20L'Oréal,%20HP,%20World%20Resources%20Institute%20and%20](http://twitter.com/intent/tweet?text=Join+over+60+experts+and+leaders+in+over+30+engaging+sessions+at+New+Metrics+'14+%7C+View+%20Speakers&summary=Join%20over%2060%20experts%20and%20leaders%20from%20Bloomberg,%20Deutsche%20Bank,%20GlobeScan,%20L'Oréal,%20HP,%20World%20Resources%20Institute%20and%20)




[\(/users/amy\\_fenton\)](#)

**Amy** [\(/users/amy\\_fenton\)](#)  
**Fenton** [\(/users/amy\\_fenton\)](#)

Global Leader, Public Development & Sustainability **Nielsen**

<http://www.nielsen.com/content/corporate/us/en.html>

 <https://twitter.com/amyfenton1>

 <http://www.linkedin.com/pub/amy-fenton/2/703/1b>



[\(/users/cking1\)](#)

**Christina** [\(/users/cking1\)](#)  
**Ingersoll** [\(/users/cking1\)](#)

Strategic Systems Manager  
**The Committee on Sustainability Assessment**

<http://thecosa.org>



[\(/users/reki\\_hattori\)](#)

**Reki** [\(/users/reki\\_hattori\)](#)  
**Hattori** [\(/users/reki\\_hattori\)](#)

CTO, Engineering  
**Datacoup** <https://datacoup.com>

 <https://twitter.com/DataCoup>



[\(/users/stephanie\\_bertels\)](#)

**Stephanie** [\(/users/stephanie\\_bertels\)](#)  
**Bertels** [\(/users/stephanie\\_bertels\)](#)

Assistant Professor  
**Beedie School of Business, Simon Fraser University**

<http://beedie.sfu.ca/profiles/StephanieBertels>

 <https://twitter.com/sbertels>

 <http://www.linkedin.com/in/sbertels>



[\(/users/deborah\\_martin\)](#)

**Deb** [\(/users/deborah\\_martin\)](#)  
**Martin** [\(/users/deborah\\_martin\)](#)

Associate Director, Stakeholder Engagement  
**SASB** <http://www.sasb.org>



[\(/users/sunil\\_misser\)](#)

**Sunil** [\(/users/sunil\\_misser\)](#)  
**Misser** [\(/users/sunil\\_misser\)](#)

CEO  
**AccountAbility** <http://www.accountability.org/>



[\(/users/mindy\\_lubber\)](#)

**Mindy** [\(/users/mindy\\_lubber\)](#)  
**Lubber** [\(/users/mindy\\_lubber\)](#)

President  
**Ceres** <http://www.ceres.org>

 <https://twitter.com/mindylubber>



[\(/users/susan-hunt-stevens\)](#)

**Susan** [\(/users/susan-hunt-stevens\)](#)  
**Hunt Stevens** [\(/users/susan-hunt-stevens\)](#)

Founder & CEO  
**WeSpire** <http://www.wespire.com/>

 <https://twitter.com/huntstevens>

 (<https://twitter.com/SASB>)

 (<http://www.twitter.com/AAInsights>)

 (<http://www.linkedin.com/in/huntslevens>)

 (<https://www.linkedin.com/company/138636>)



[/users/cora\\_olsen](#)

[/users/tom-laforge](#)

[/users/gwen\\_nguyen](#)

[/users/andy\\_wu](#)

[Cora /users/cora\\_olsen Olsen /users/cora\\_olsen](#)

[Tom /users/tom-laforge LaForge /users/tom-laforge](#)

[Gwen /users/gwen\\_nguyen Nguyen /users/gwen\\_nguyen](#)

[Andy /users/andy\\_wu Wu /users/andy\\_wu](#)

ESG Data Manager  
**Novo Nordisk AS**

Global Director of Human & Cultural Insights  
**The Coca-Cola Company**

Cause Director  
**Indiegogo**

Principal Business Analyst, CSR  
**CA Technologies**

<http://www.novonordisk.com/default.asp>

<http://www.coca-colacompany.com/sustainabilityreport/>

<https://www.indiegogo.com/>

<http://www.ca.com/us/default.aspx>

 (<https://twitter.com/novonordiskus>)

 (<https://twitter.com/TomLaForge>)

 (<https://twitter.com/unquyen>)

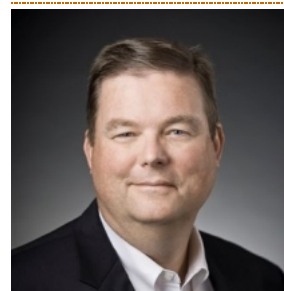
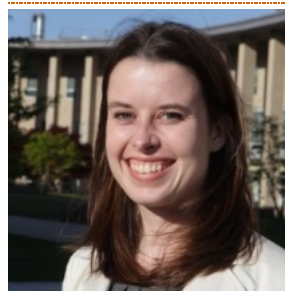
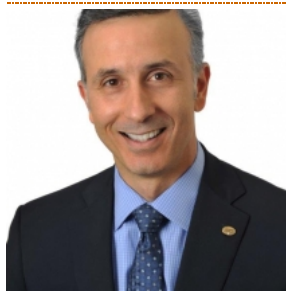
 (<https://twitter.com/CAinc>)

 ([https://www.linkedin.com/profile/view?id=2307643&trk=nav\\_responsive\\_tab\\_profile](https://www.linkedin.com/profile/view?id=2307643&trk=nav_responsive_tab_profile))

 (<http://www.linkedin.com/in/tomlaforge>)

 (<http://www.linkedin.com/in/qwenuen>)

 (<http://www.linkedin.com/in/andywu/>)



[/users/emilio\\_tenuta](#)

[/users/susan\\_murphy](#)

[/users/stephsharma](#)

[/users/steve-leffin](#)

[Emilio /users/emilio\\_tenuta Tenuta /users/emilio\\_tenuta](#)

[Susan /users/susan\\_murphy Murphy /users/susan\\_murphy](#)

[Steph /users/stephsharma Sharma /users/stephsharma](#)

[Steve /users/steve-leffin Leffin /users/steve-leffin](#)

VP, Corporate Sustainability  
**Ecolab**

Service Delivery Director  
**PE International** (<http://www.pe-international.com/america/index/>)

Managing Director  
**Lead The Difference**

Director of Global Sustainability  
**UPS**

<http://www.ecolab.com/sustainability>


<http://www.pe-international.com/america/index/>

<http://www.leadthedifference.com>


<http://www.responsibility.ups.com/Sustainability>

 (<https://twitter.com/emiliotenuta>)

 ([https://twitter.com/pe\\_experts](https://twitter.com/pe_experts))

 (<http://www.twitter.com/LeadTheDiff>)

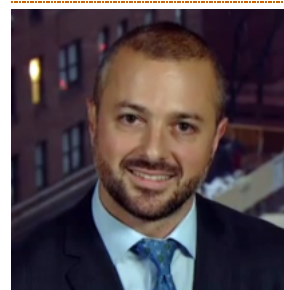
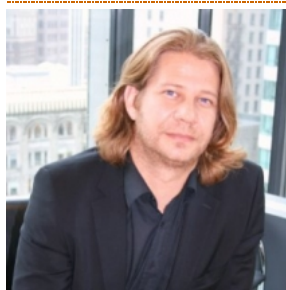
 (<https://twitter.com/UPS>)

 (<https://www.linkedin.com/pub/emilio-tenuta/0/846/670>)

 (<https://www.linkedin.com/in/susanfmurphy>)

 (<http://www.linkedin.com/pub/steph-sharma/1/403/748>)

 (<http://www.linkedin.com/pub/steve-leffin/65/a66/ba6>)



[/users/tom\\_gosselin](#)

[/users/ory-zik](#)

[/users/tom\\_omalley](#)

[/users/leonardo\\_bonanni](#)

[Tom](#)

[Ory /users/ory-zik Zik](#)

[Tom](#)

[Leonardo](#)

[/users/tom\\_gosselin](#)

[Gosselin](#)

[/users/tom\\_gosselin](#)

Sustainability Director

[Det Norske Veritas](#)

[\(http://www.dnvusa.com/\)](http://www.dnvusa.com/)

[in](https://www.linkedin.com/pub/tom-gosselin/3/228/bb) [in](https://www.linkedin.com/pub/tom-gosselin/3/228/bb)

[/users/ory-zik](#)

CEO, Founder

[Energy Points. Inc.](#)

[\(http://www.energypoints.com/\)](http://www.energypoints.com/)

[t](https://twitter.com/EnergyPoints) [t](https://twitter.com/EnergyPoints)

[in](https://www.linkedin.com/pub/ory-zik/b/3a6/281) [in](https://www.linkedin.com/pub/ory-zik/b/3a6/281)

[/users/tom\\_omalley](#)

[O'Malley](#)

[/users/tom\\_omalley](#)

Co-Founder & CEO

[Convetit](#) [\(http://convetit.com/\)](http://convetit.com/)

[t](https://twitter.com/Convetit) [t](https://twitter.com/Convetit)

[in](https://www.linkedin.com/in/tomalley) [in](https://www.linkedin.com/in/tomalley)

[/users/leonardo\\_bonanni](#)

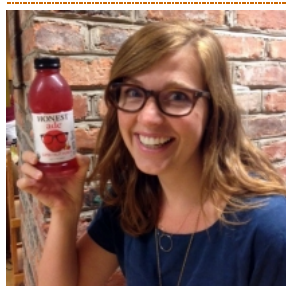
[Bonanni](#)

[/users/leonardo\\_bonanni](#)

Founder & CEO

[Sourcemap](#) [\(http://sourcemap.com/\)](http://sourcemap.com/)

[t](https://twitter.com/ameriaao) [t](https://twitter.com/ameriaao)



[/users/jenny\\_burns](#)

[Jenny](#)

[/users/jenny\\_burns](#)

[Burns](#)

[/users/jenny\\_burns](#)

Director, Mission

[Honest Tea](#)

[\(http://www.honesttea.com/\)](http://www.honesttea.com/)

[t](https://twitter.com/HonestTea) [t](https://twitter.com/HonestTea)

[in](http://lnkd.in/cFP6c9) [in](http://lnkd.in/cFP6c9)



[/users/andrew\\_park](#)

[Andrew](#)

[/users/andrew\\_park](#)

[Park](#)

[/users/andrew\\_park](#)

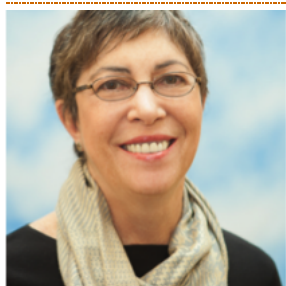
Senior Sustainability

Strategist

[Bloomberg](#)

[\(http://www.bloomberg.com/\)](http://www.bloomberg.com/)

[t](https://twitter.com/Bloomberg) [t](https://twitter.com/Bloomberg)



[/users/kathrin-winkler](#)

[Kathrin](#)

[/users/kathrin-winkler](#)

[Winkler](#)

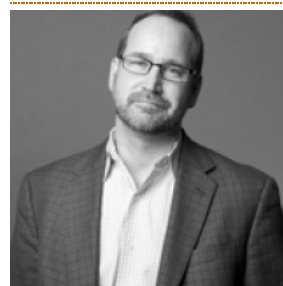
[/users/kathrin-winkler](#)

Chief Sustainability Officer

[EMC Corporation](#)

[\(http://www.emc.com/sustainability/\)](http://www.emc.com/sustainability/)

[t](https://twitter.com/KathrinRWinkler) [t](https://twitter.com/KathrinRWinkler)



[/users/kyle\\_peterson](#)

[Kyle](#)

[/users/kyle\\_peterson](#)

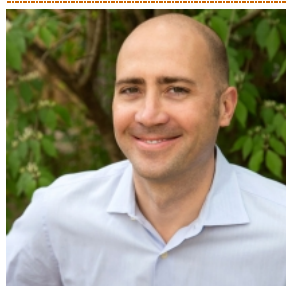
[Peterson](#)

[/users/kyle\\_peterson](#)

Managing Director

[FSG](#) [\(http://www.fsg.org/\)](http://www.fsg.org/)

[t](https://twitter.com/SVInitiative) [t](https://twitter.com/SVInitiative)



[/users/jeff-gowdy](#)

[Jeff](#)

[/users/jeff-gowdy](#)

[Gowdy](#)

[/users/jeff-gowdy](#)

President

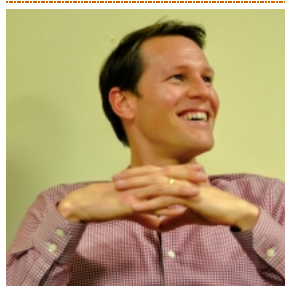
[J. Gowdy Consulting](#)

[\(http://www.jgowdyconsulting.com/\)](http://www.jgowdyconsulting.com/)

[t](https://twitter.com/JGowdyConsult) [t](https://twitter.com/JGowdyConsult)

[in](http://www.linkedin.com/in/jeffreygowdy) [in](http://www.linkedin.com/in/jeffreygowdy)

[in](http://www.linkedin.com/in/jeffreygowdy) [in](http://www.linkedin.com/in/jeffreygowdy)



[/users/matt\\_ellis](#)

[Matt](#)

[/users/matt\\_ellis](#)

[Ellis](#)

[/users/matt\\_ellis](#)

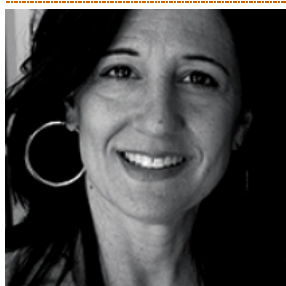
CEO

[Measurabl](#)

[\(http://www.measurabl.com/\)](http://www.measurabl.com/)

[t](https://twitter.com/MattEllisSD) [t](https://twitter.com/MattEllisSD)

[in](https://www.linkedin.com/in/measurabl) [in](https://www.linkedin.com/in/measurabl)



[/users/terry\\_swack](#)

[Terry](#)

[/users/terry\\_swack](#)

[Swack](#)

[/users/terry\\_swack](#)

Founder & CEO

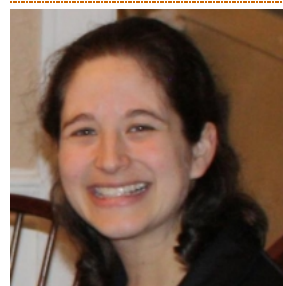
[Sustainable Minds](#)

[\(http://www.sustainableminds.com/\)](http://www.sustainableminds.com/)

[t](https://twitter.com/sustainableminds) [t](https://twitter.com/sustainableminds)

[in](https://www.linkedin.com/in/terryswack) [in](https://www.linkedin.com/in/terryswack)

[in](https://www.linkedin.com/in/terryswack) [in](https://www.linkedin.com/in/terryswack)



[/users/elsa\\_olivetti](#)

[Elsa](#)

[/users/elsa\\_olivetti](#)

[Olivetti](#)

[/users/elsa\\_olivetti](#)

Research Scientist

MIT





[\(/users/catherine\\_benoit\\_norris\)](#)

**Catherine Benoit-Norris**  
[\(/users/catherine\\_benoit\\_norris\)](#)  
[\(/users/catherine\\_benoit\\_norris\)](#)

Director of Social Assessments and Strategy  
New Earth



[\(/users/greg-norris\)](#)

**Greg Norris**  
[\(/users/greg-norris\)](#)  
[\(/users/greg-norris\)](#)

Co-Director of SHINE  
**Harvard School of Public Health**  
<http://chge.med.harvard.edu/category/corporate-sustainability-and-health-shine-0>

<https://twitter.com/CHGEHarvard>

<http://www.linkedin.com/pub/gregory-norris/8/10a/749>



[\(/users/sebastien-zinck\)](#)

**Sebastien Zinck**  
[\(/users/sebastien-zinck\)](#)  
[\(/users/sebastien-zinck\)](#)

Manager, Eco-design and Life-Cycle Assessment  
**Steelcase**  
<http://www.steelcase.com/en/pages/homepage.aspx>

<https://twitter.com/Steelcase>

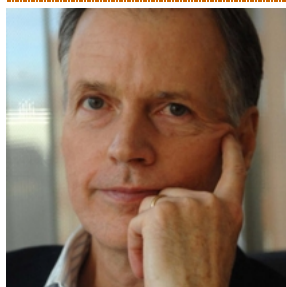


[\(/users/veronica\\_nyhan\\_jones\)](#)

**Veronica Nyhan Jones**  
[\(/users/veronica\\_nyhan\\_jones\)](#)  
[\(/users/veronica\\_nyhan\\_jones\)](#)

Strategic Community Investment Lead, Infrastructure & Natural Resources  
**IFC** <http://www.ifc.org/>

[https://twitter.com/IFC\\_org](https://twitter.com/IFC_org)

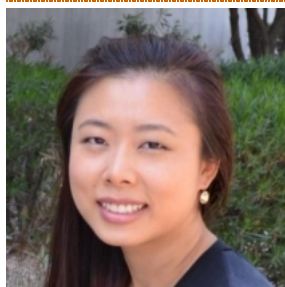


[\(/users/thomas\\_malone\)](#)

**Thomas Malone**  
[\(/users/thomas\\_malone\)](#)  
[\(/users/thomas\\_malone\)](#)

Director  
**MIT Center for Collective Intelligence** <http://cci.mit.edu/>

<https://twitter.com/MTSloan>



[\(/users/linda\\_qian\)](#)

**Linda Qian**  
[\(/users/linda\\_qian\)](#)  
[\(/users/linda\\_qian\)](#)

CSR Communications Manager  
**Intel**  
<http://www.intel.com/content/www/us/en/homepage.html>

<https://twitter.com/intel>

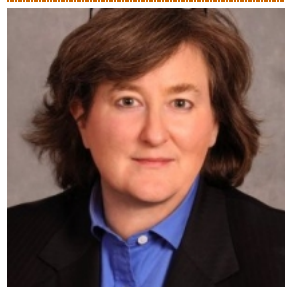


[\(/users/aaron\\_smith\)](#)

**Aaron Smith**  
[\(/users/aaron\\_smith\)](#)  
[\(/users/aaron\\_smith\)](#)

Director of Sustainable Building Solutions  
**Asa Abloy**  
<http://www.assaabloydss.com/local/dss/sustainability/>

<https://twitter.com/asmith55364>

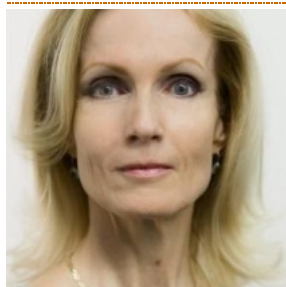


[\(/users/erika\\_karp\)](#)

**Erika Karp**  
[\(/users/erika\\_karp\)](#)  
[\(/users/erika\\_karp\)](#)

CEO  
**Cornerstone Capital Group**

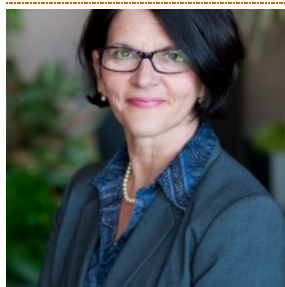
<http://cornerstonecapinc.com/>  
 [https://twitter.com/Cornerstone\\_Cap](https://twitter.com/Cornerstone_Cap)



[\(/users/sabine\\_miltner\)](#)

**Sabine Miltner**  
[\(/users/sabine\\_miltner\)](#)  
[\(/users/sabine\\_miltner\)](#)

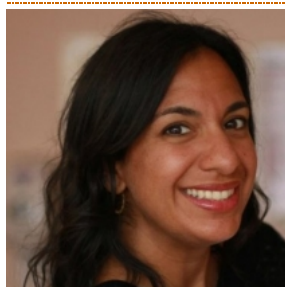
Managing Director & Group Sustainability Officer  
**Deutsche Bank**



[\(/users/katie-schmitz-eulitt\)](#)

**Katie Schmitz-Eulitt**  
[\(/users/katie-schmitz-eulitt\)](#)  
[\(/users/katie-schmitz-eulitt\)](#)

Director of Stakeholder Engagement  
**SASB** <http://www.sasb.org/>



[\(/users/roya\\_kazemi\)](#)

**Roya Kazemi**  
[\(/users/roya\\_kazemi\)](#)  
[\(/users/roya\\_kazemi\)](#)

Director of GreenNYC  
**NYC Mayor's Office of Long-Term Planning and**



[\(/users/svetlana\\_zenkin\)](#)

**Svetlana Zenkin**  
[\(/users/svetlana\\_zenkin\)](#)  
[\(/users/svetlana\\_zenkin\)](#)

Global Environmental Progress  
**HP**

[https://www.db.com/index\\_e.htm](https://www.db.com/index_e.htm)

[https://twitter.com/Deutsche\\_News](https://twitter.com/Deutsche_News)

<https://twitter.com/kseultt>

<http://www.linkedin.com/pub/katie-schmitz-eulitt/0/a11/4b>

**Sustainability**  
<http://www.nvc.gov/html/greenvc/html/home/home.shtml>

[https://twitter.com/Birdie\\_NYC](https://twitter.com/Birdie_NYC)

<http://www.hp.com/country/us/en/uc/welcome.html>

<https://twitter.com/lanasthoughts>

<https://www.linkedin.com/pub/svetlana-zenkin/b/53/b88>



[/users/john-havens](https://twitter.com/johnhavens)

**John (/users/john-havens) Havens**  
[/users/john-havens](https://twitter.com/john-havens)

Founder  
**The H(app)athon Project**  
<http://happathon.com/>

<https://twitter.com/johnhavens>

<http://www.linkedin.com/in/johnhavens>



[/users/eric\\_whan](https://twitter.com/ericwhan)

**Eric (/users/eric\_whan) Whan (/users/eric\_whan)**

Director, Sustainability Practice  
**GlobeScan**  
<http://www.globescan.com/>

<https://twitter.com/GlobeScan>



[/users/terry\\_garcia](https://twitter.com/terrygarcia)

**Terry (/users/terry\_garcia) Garcia (/users/terry\_garcia)**

Chief Science and Exploration Officer  
**National Geographic**  
<http://www.nationalgeographic.com/>

<https://twitter.com/NatGeo>

<https://www.linkedin.com/in/tdgarcia>



[/users/brad\\_peirce](https://twitter.com/bradpeirce)

**Brad (/users/brad\_peirce) Peirce (/users/brad\_peirce)**

Vice President, TD Environment  
**TD Bank** (<http://www.tdbank.com/>)

<https://twitter.com/naturalinks>



[/users/charles\\_duclaux](https://twitter.com/charlesduclaux)

**Charles (/users/charles\_duclaux) Duclaux (/users/charles\_duclaux)**

Head of Corporate Responsibility Reporting and Environmental Innovation  
**L'Oréal**  
<http://www.loreal.com/default.aspx>

<https://twitter.com/Loreal>



[/users/rob\\_michalak](https://twitter.com/robmichalak)

**Rob (/users/rob\_michalak) Michalak (/users/rob\_michalak)**

Global Director of Social Mission  
**Ben & Jerry's**  
<http://www.benjerry.com/>

<https://twitter.com/benandjerrys>



[/users/mary-jo-cook](https://twitter.com/maryjocook)

**Mary Jo (/users/mary-jo-cook) Cook (/users/mary-jo-cook)**

Chief Impact Officer  
**Fair Trade USA**  
<http://www.fairtradeusa.org/>

<https://twitter.com/fairtradeusa>

<http://www.linkedin.com/pub/mary-jo-cook/6/857/396>



[/users/jenny\\_rushmore](https://twitter.com/jennyrushmore)

**Jenny (/users/jenny\_rushmore) Rushmore (/users/jenny\_rushmore)**

Director of Responsible Travel  
**TripAdvisor**  
<http://www.tripadvisor.com>

<https://twitter.com/TripAdvisor>



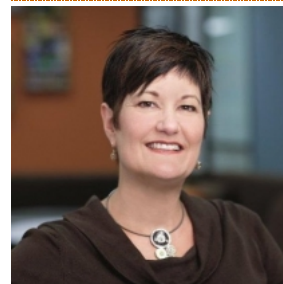
[/users/thomas-odenwald](https://twitter.com/thomasodenwald)



[/users/dirk-v%C3%B6ste](https://twitter.com/dirkvoeste)



[/users/mark\\_robertson](https://twitter.com/markrobertson)



[/users/kathryn\\_caulfield](https://twitter.com/kathryncaulfield)

[Thomas \(/users/thomas-odenwald\) Odenwald \(/users/thomas-odenwald\)](#)

Senior Vice President  
[SAP \(http://www.sap.com/corporate-en/sustainability/index.epx\)](http://www.sap.com/corporate-en/sustainability/index.epx)

[t \(/http://www.twitter.com/todenwald\)](http://www.twitter.com/todenwald)  
[in \(https://www.linkedin.com/in/thomasodenwald\)](https://www.linkedin.com/in/thomasodenwald)

[Dirk \(/users/dirk-v%C3%B6ste\) Voeste \(/users/dirk-v%C3%B6ste\)](#)

Vice President Sustainability  
[BASF \(http://www.basf.com/group/corporate/us/en/\)](http://www.basf.com/group/corporate/us/en/)

[t \(https://twitter.com/BASFCorporation\)](https://twitter.com/BASFCorporation)

[Mark \(/users/mark\\_robertson\) Robertson \(/users/mark\\_robertson\)](#)

Head of Marketing & Communications  
[Sedex \(http://www.sedexglobal.com/\)](http://www.sedexglobal.com/)

[t \(https://twitter.com/CSRCommunicator\)](https://twitter.com/CSRCommunicator)

[Kathryn \(/users/kathryn\\_caulfield\) Caulfield \(/users/kathryn\\_caulfield\)](#)

VP, Global Corporate Communications & Corporate Responsibility  
[The Clorox Company \(http://www.thecloroxcompany.com/\)](http://www.thecloroxcompany.com/)

[t \(https://twitter.com/caulfield\\_kat\)](https://twitter.com/caulfield_kat)



[Emma \(/users/emma-stewart\) Stewart \(/users/emma-stewart\)](#)

Head of Sustainability Solutions  
[Autodesk \(http://www.autodesk.com/\)](http://www.autodesk.com/)

[t \(https://twitter.com/autodesk\)](https://twitter.com/autodesk)

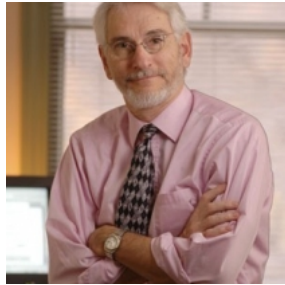


[Libby \(/users/libby-bernick\) Bernick \(/users/libby-bernick\)](#)

Senior Vice President, North America  
[Trucost \(http://www.trucost.com/\)](http://www.trucost.com/)

[t \(https://twitter.com/LBernick\)](https://twitter.com/LBernick)

[in \(http://www.linkedin.com/in/libbybernick\)](http://www.linkedin.com/in/libbybernick)



[Allen \(/users/allen-white\) White \(/users/allen-white\)](#)

Founder & Co-Chair  
[GISR \(http://ratesustainability.org/\)](http://ratesustainability.org/)

[t \(https://twitter.com/GISRnews\)](https://twitter.com/GISRnews)



[Bob \(/users/bob-willard\) Willard \(/users/bob-willard\)](#)

Sustainability Author and Speaker  
[Sustainability Advantage \(http://sustainabilityadvantage.com/\)](http://sustainabilityadvantage.com/)

[t \(https://twitter.com/bob\\_willard\)](https://twitter.com/bob_willard)

[in \(https://www.linkedin.com/in/bobwillardsustainabilityquv\)](https://www.linkedin.com/in/bobwillardsustainabilityquv)



[Robert \(/users/robert\\_eccles\) Eccles \(/users/robert\\_eccles\)](#)

Professor of Management Practice  
[Harvard Business School \(http://www.hbs.edu/\)](http://www.hbs.edu/)

[t \(https://twitter.com/HarvardHBS\)](https://twitter.com/HarvardHBS)



[Andrew \(/users/andrew-winston\) Winston \(/users/andrew-winston\)](#)

Author, Founder  
[The Big Pivot, Winston Eco-Strategies \(http://www.andrewwinston.com/\)](http://www.andrewwinston.com/)

[t \(https://twitter.com/AndrewWinston\)](https://twitter.com/AndrewWinston)

[in \(http://www.linkedin.com/pub/andrew-winston/0/ba2/7b7\)](http://www.linkedin.com/pub/andrew-winston/0/ba2/7b7)



[Andrew \(/users/andrew\\_savini\) Savini \(/users/andrew\\_savini\)](#)

Manager, Supplier Management & Audits  
[Intertek \(http://www.intertek.com/\)](http://www.intertek.com/)

[t \(https://twitter.com/Intertek\)](https://twitter.com/Intertek)

[in \(https://www.linkedin.com/in/andrewsavini\)](https://www.linkedin.com/in/andrewsavini)



[Denise \(/users/denise\\_hills\) Hills \(/users/denise\\_hills\)](#)

Head of Sustainability  
[Itau \(http://www.itau.com/\)](http://www.itau.com/)

[t \(https://twitter.com/itau\)](https://twitter.com/itau)

[in \(https://www.linkedin.com/pub/denise-hills/8/563/909\)](https://www.linkedin.com/pub/denise-hills/8/563/909)



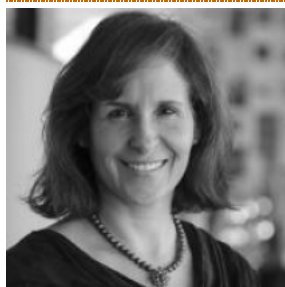


[\(/users/jed-davis\)](#)

[Jed \(/users/jed-davis\) Davis \(/users/jed-davis\)](#)

Director of Sustainability  
**Cabot Creamery Cooperative**  
[\(http://www.cabotcheese.coop/\)](http://www.cabotcheese.coop/)

[E \(/https://twitter.com/cabotcheese\)](https://twitter.com/cabotcheese)

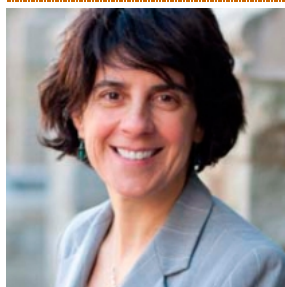


[\(/users/cynthia\\_cummis\)](#)

[Cynthia \(/users/cynthia\\_cummis\) Cummis \(/users/cynthia\\_cummis\)](#)

Deputy Director, GHG Protocol  
**World Resources Institute**  
[\(http://www.wri.org/\)](http://www.wri.org/)

[E \(/https://twitter.com/worldresources\)](https://twitter.com/worldresources)



[\(/users/bea-bocalandro\)](#)

[Bea \(/users/bea-bocalandro\) Bocalandro \(/users/bea-bocalandro\)](#)

President  
**VeraWorks**  
[\(http://www.veraworks.com/\)](http://www.veraworks.com/)

[in \(/http://www.linkedin.com/pub/bea-bocalandro/1/778/ab1\)](http://www.linkedin.com/pub/bea-bocalandro/1/778/ab1)



[\(/users/jo%C3%A3o\\_fontes\)](#)

[João \(/users/jo%C3%A3o\\_fontes\) Fontes \(/users/jo%C3%A3o\\_fontes\)](#)

Social Footprinting Expert  
**PRé Sustainability**  
[\(http://www.pre-sustainability.com/\)](http://www.pre-sustainability.com/)

[E \(/https://twitter.com/PRéSustainability\)](https://twitter.com/PRéSustainability)



[\(/users/jon-dettling\)](#)

[Jon \(/users/jon-dettling\) Dettling \(/users/jon-dettling\)](#)

Managing Director, US  
**Quantis** [\(http://www.quantis-intl.com/\)](http://www.quantis-intl.com/)

[E \(/https://twitter.com/jondettling\)](https://twitter.com/jondettling)

[in \(/http://www.linkedin.com/profile/view?id=19129303\)](http://www.linkedin.com/profile/view?id=19129303)



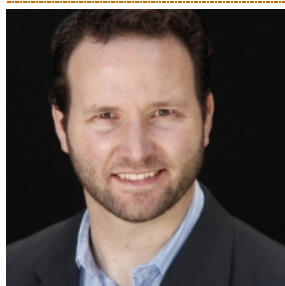
[\(/users/bob-mann\)](#)

[Bob \(/users/bob-mann\) Mann \(/users/bob-mann\)](#)

COO  
**Sustainalytics**  
[\(http://www.sustainalytics.com/\)](http://www.sustainalytics.com/)

[E \(/https://twitter.com/Sustainalytics\)](https://twitter.com/Sustainalytics)

[in \(/http://www.linkedin.com/pub/bob-mann/3/24a/20\)](http://www.linkedin.com/pub/bob-mann/3/24a/20)

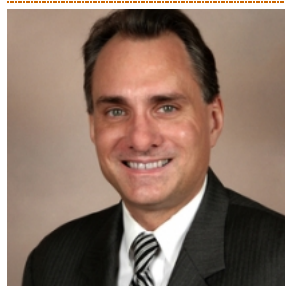


[\(/users/daniel-aronson\)](#)

[Daniel \(/users/daniel-aronson\) Aronson \(/users/daniel-aronson\)](#)

Founder  
**Valutus**  
[E \(/https://twitter.com/DanielAronson\)](https://twitter.com/DanielAronson)

[in \(/https://www.linkedin.com/in/danielaronson\)](https://www.linkedin.com/in/danielaronson)



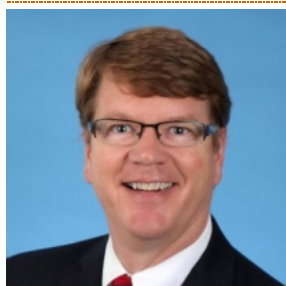
[\(/users/mark-tulay\)](#)

[Mark \(/users/mark-tulay\) Tulay \(/users/mark-tulay\)](#)

Program Director  
**GISR** [\(http://ratesustainability.org/\)](http://ratesustainability.org/)

[E \(/https://twitter.com/MarkTulayESG\)](https://twitter.com/MarkTulayESG)

[in \(/http://www.linkedin.com/in/mtulay\)](http://www.linkedin.com/in/mtulay)

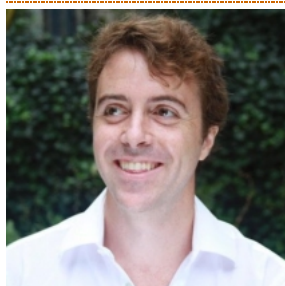


[\(/users/tony-kingsbury\)](#)

[Tony \(/users/tony-kingsbury\) Kingsbury \(/users/tony-kingsbury\)](#)

Founder & President  
**TKingsbury Consulting**  
[\(http://www.tkingsbury.com/\)](http://www.tkingsbury.com/)

[in \(/http://www.linkedin.com/pub/tony-kingsbury/2/402/4b6\)](http://www.linkedin.com/pub/tony-kingsbury/2/402/4b6)

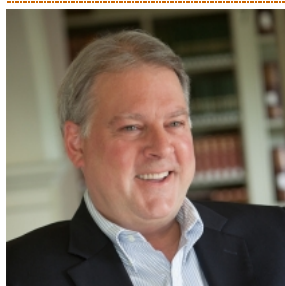


[\(/users/alexander\\_gillett\)](#)

[Alexander \(/users/alexander\\_gillett\) Gillett \(/users/alexander\\_gillett\)](#)

CEO  
**HowGood**  
[\(http://www.howgood.com/\)](http://www.howgood.com/)

[E \(/https://twitter.com/HowGoodRatings\)](https://twitter.com/HowGoodRatings)

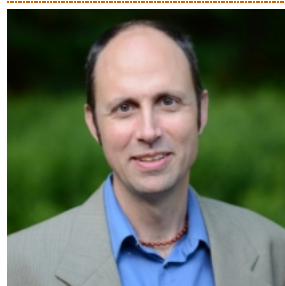


[\(/users/mark-mcelroy\)](#)

[Mark \(/users/mark-mcelroy\) McElroy \(/users/mark-mcelroy\)](#)

Founder & Executive Director  
**Center for Sustainable Organizations**  
[\(http://www.sustainableorganizations.org/\)](http://www.sustainableorganizations.org/)

[E \(/https://twitter.com/mw mce\)](https://twitter.com/mw mce)



[\(/users/bill-baue\)](#)

[Bill \(/users/bill-baue\) Baue \(/users/bill-baue\)](#)

Co-Founder  
**Sustainability Context Group**  
[\(http://www.sustcontext.org/\)](http://www.sustcontext.org/)

[E \(/http://twitter.com/Bbaue\)](http://twitter.com/Bbaue)

[in \(/http://www.linkedin.com/in/billbaue\)](http://www.linkedin.com/in/billbaue)



[\(/users/jason-saul\)](#)

[Jason \(/users/jason-saul\)](#)  
[Saul \(/users/jason-saul\)](#)

Founder & CEO

[Mission Measurement](#)

<http://www.missionmeasurement.com>



<https://twitter.com/jasonasaul>



<http://www.linkedin.com/in/jasonsaul1>



[\(/users/r-paul-herman\)](#)

[Paul \(/users/r-paul-herman\)](#)  
[Herman \(/users/r-paul-herman\)](#)

CEO + Founder

[HIP \(Human Impact+Profit\)](#)  
[Investor Inc.](#)

<http://www.HIPInvestor.com>



<https://twitter.com/hipinvestor>



<http://www.linkedin.com/in/rpaulh>



[\(/users/suzanne-shelton\)](#)

[Suzanne \(/users/suzanne-shelton\)](#)  
[Shelton \(/users/suzanne-shelton\)](#)

President and CEO

[Shelton Group](#)

<http://www.sheltongroupinc.com>



<https://twitter.com/sheltongrp>



<http://www.linkedin.com/companies/421812/>