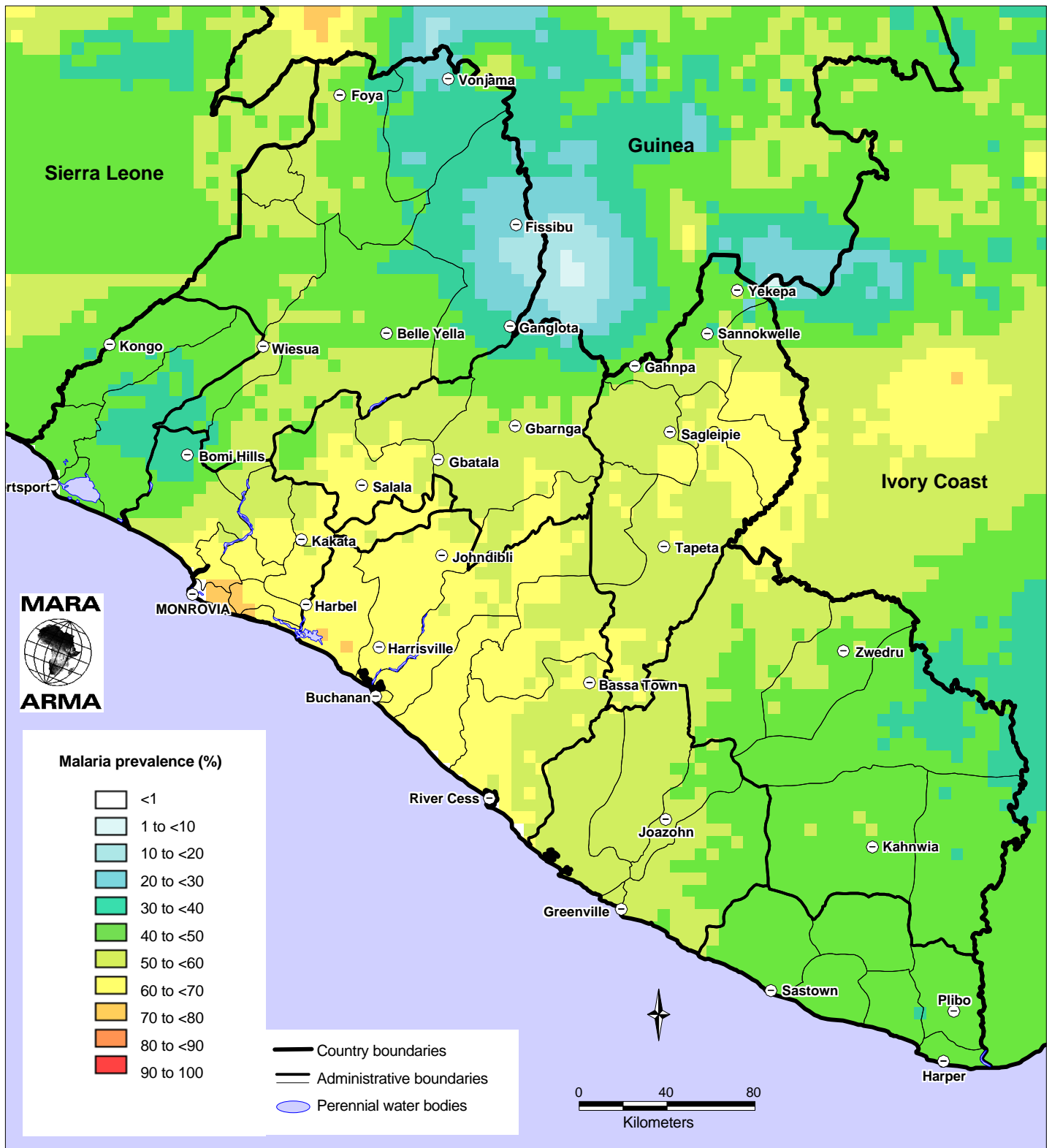


Liberia: Malaria Prevalence Model



This map is a product of the MARA/ARMA collaboration (<http://www.mara.org.za>). March 2002, Medical Research Council, PO Box 17120, Congella, 4013, Durban, South Africa.
 CORE FUNDERS of MARA/ARMA: International Development Research Centre, Canada (IDRC); The Wellcome Trust UK; South African Medical Research Council (SAMRC); Swiss Tropical Institute, Multilateral Initiative on Malaria (MIM) / Special Programme for Research & Training in Tropical Diseases (TDR), Roll Back Malaria (RBM), Malaria Prevalence Model: I. Kleinschmidt et al. 2001. An empirical malaria distribution map for West Africa. Tropical Medicine and International Health 6: 779-786
 Topographical data: African Data Sampler, WRI, http://www.igc.org/wri/sdis/maps/ads/ads_id